

THE WILLOWVIEW

**SAVE UP TO 50%
ON YOUR UTILITIES***

**5 Bedroom
UNIT**



Upper Level: **918** sq.ft.
Lower Level: **775** sq.ft.
(Lower Level is Developed)
Deck: **80** sq.ft.
Garage: **292** sq.ft.



Source: www.sips.org

**OVER
1693 Sq.Ft.
DEVELOPED**

Subsidy Plan:

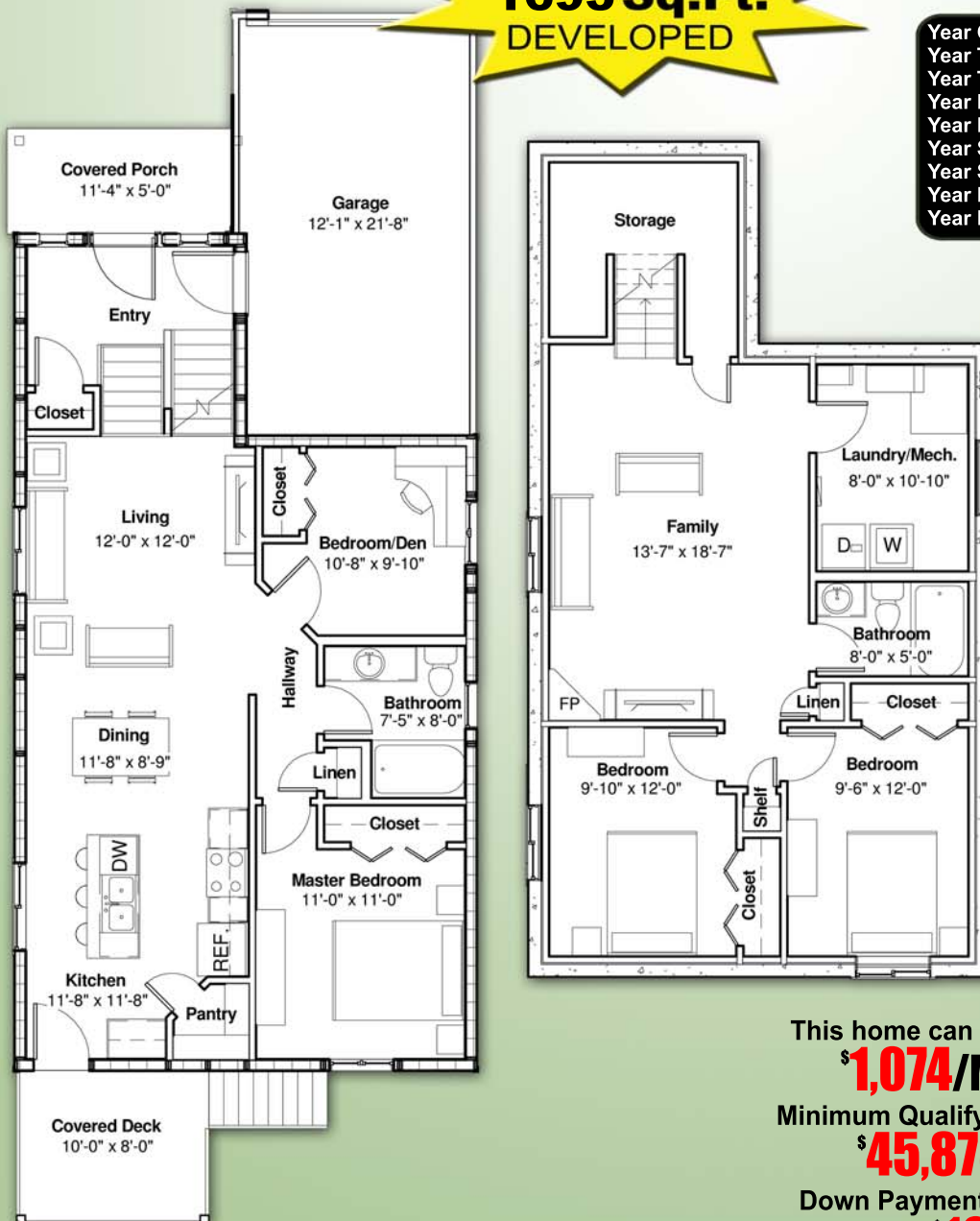
Year One : \$350/month
Year Two : \$320/month
Year Three : \$275/month
Year Four : \$235/month
Year Five : \$190/month
Year Six : \$150/month
Year Seven : \$100/month
Year Eight : \$ 75/month
Year Nine : \$ 50/month

Unit Features

- 5 Bedrooms
- 2 Bath
- Covered Front Entry
- Spacious Kitchen
- Granite Countertops
- 2 Bedrooms Upstairs
- Metal Railings
- Electric Fireplace
- Air Conditioned
- Plant Ledges
- Rounded Corners
- And Much More!

Build Green Features

- Energy Efficient SIP Construction
- Hardie Plank/SmartTrim (optional)
- Tankless Hot Water
- Insulated Hot Water Lines
- High Efficiency Furnace
- Motorized Fresh Air Inlet
- Low Maintenance Deck Coverings (Optional)
- EPS Insulation Throughout
- Zero Formaldehyde Insulation
- 25-year Roofing Material
- HRV System
- Mildew and Mold Resistant Materials Used For All External Walls (Optional)
- Energy Efficient Appliances
- And Much More!



This home can be yours for
\$1,074/Month
Minimum Qualifying Income:
\$45,875/Yr.
Down Payment Required:
ONLY \$10,222

Based on a lot price of \$80,000

The Developer reserves the right to make modifications and changes to building and property design, specifications and features; should they be necessary to maintain the high standard and design integrity of this project or to maintain local building code requirements. Pricing based on a interest rate of 4.25%

WWW.CCLHOMES.COM