

"Enjoy A Classic Lifestyle."

**Unit Features:**

- GRANITE COUNTERTOPS
- Energy Efficient Construction
- 9 Year Mortgage Assistance
- In Slab Water Heating
- Community Gardens
- Heated Single Car Garage
- Spacious Floor Plans
- Spacious Kitchen
- 5 Year New Home Warranty
- Covered Rear Patio
- Front Veranda
- 2 Bedroom Plan
- SIP Construction
- Tankless Hot Water
- In Floor Hot Water Heating
- Beech Cabinets (3 finishing options)
- 6 Piece Appliance Package
- Energy Efficient Windows
- VOL Paint
- Close to Schools/Amenities
- Signature Fencing
- And Much More.....

**The Victoria**

Suite: 1059 Sq. Ft.  
 Garage: 271/ 284 Sq. Ft.  
 Front Patio: 156 Sq. Ft.  
 Rear Patio: 112 Sq. Ft.

**Subsidy Plan:**

Year One :	\$475/month
Year Two :	\$410/month
Year Three :	\$350/month
Year Four :	\$290/month
Year Five :	\$250/month
Year Six :	\$250/month
Year Seven :	\$200/month
Year Eight :	\$160/month
Year Nine :	\$120/month

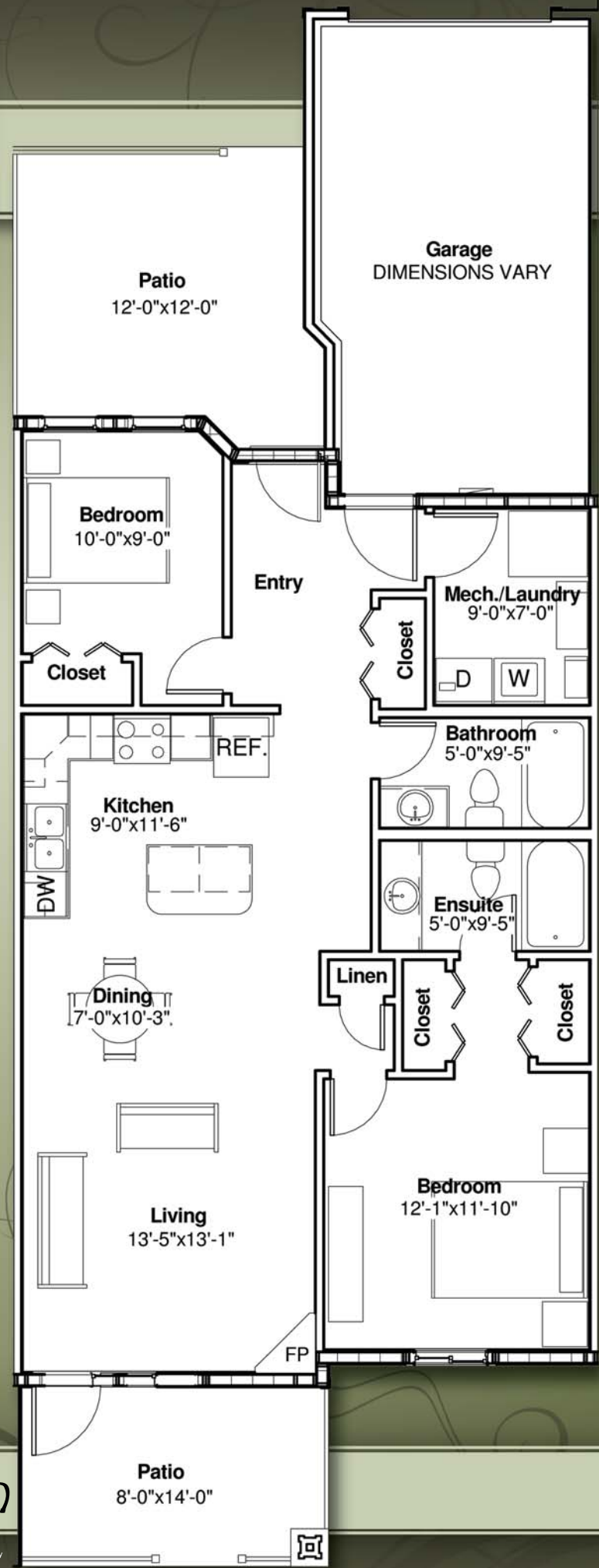
**Our 9 Year Mortgage Assistance Plan Offers:**

Ownership Starting at ONLY **\$862/Month** INCLUDING CONDO FEES!  
 Qualifying Income Starting at: **\$38,000/Yr.**  
 Down Payment As Low As: **\$6,450**



Sales: (403) 831-2270

www.CCLHOMES.com



The Developer reserves the right to make modifications and changes to building and property design, specifications and features; should they be necessary to maintain the high standard and design integrity of this project or to maintain local building code requirements. Pricing based on 4.29%