



SOUTHLANDS POINTE

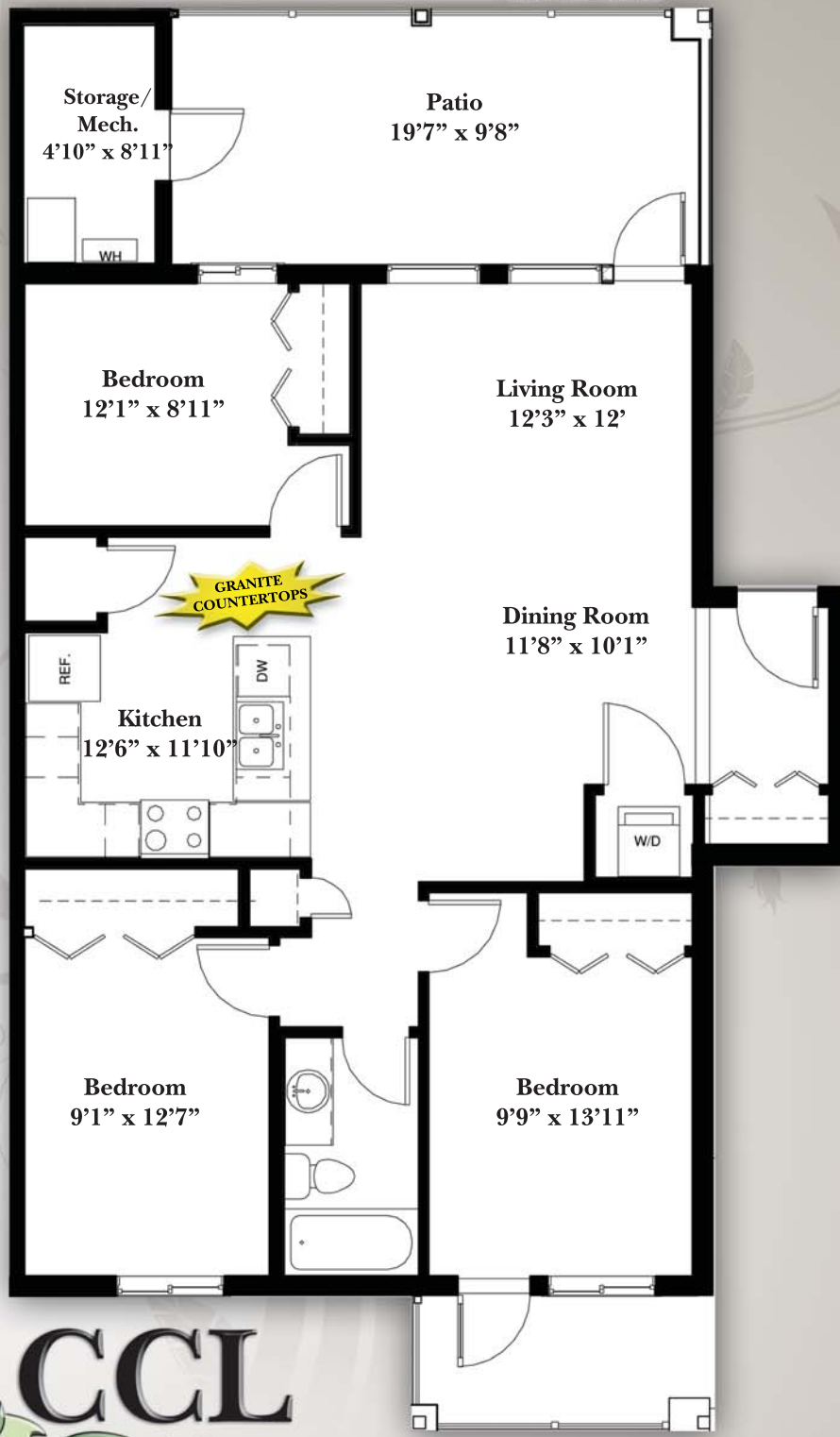
Another Classic Community

The Sapphire

1098 Sq.Ft.
3 Bedroom

FEATURES:

- Granite Countertops
- 10 Year Mortgage Assistance
- Built Green Home
- SAVE UP TO 50% on UTILITIES
- Spacious Floor Plans
- Tankless Hot Water
- Oak or Beech Cabinets
- Pantry in Kitchen
- 5 Year New Home Warranty
- Covered Patio
- Storage Area
- 3 Bedroom
- Stacking Washer & Dryer
- 5 Piece Appliance Package
- Energy Efficient Windows
- High Efficiency Furnace
- No VOC Paint
- Close to Amenities
- And Much More.....



Subsidy Plan:

Year One :	\$475/month
Year Two :	\$435/month
Year Three :	\$390/month
Year Four :	\$345/month
Year Five :	\$300/month
Year Six :	\$250/month
Year Seven :	\$200/month
Year Eight :	\$ 150/month
Year Nine :	\$ 95/month
Year Ten :	\$ 40/month



For information
contact our sales office
(403) 526-2021
or email sales@cclhomes.com

Date Modified: August,03/10

The Developer reserves the right to make modifications and changes to building and property design, specifications and features; should they be necessary to maintain the high standard and design integrity of this project or to maintain local building code requirements.