



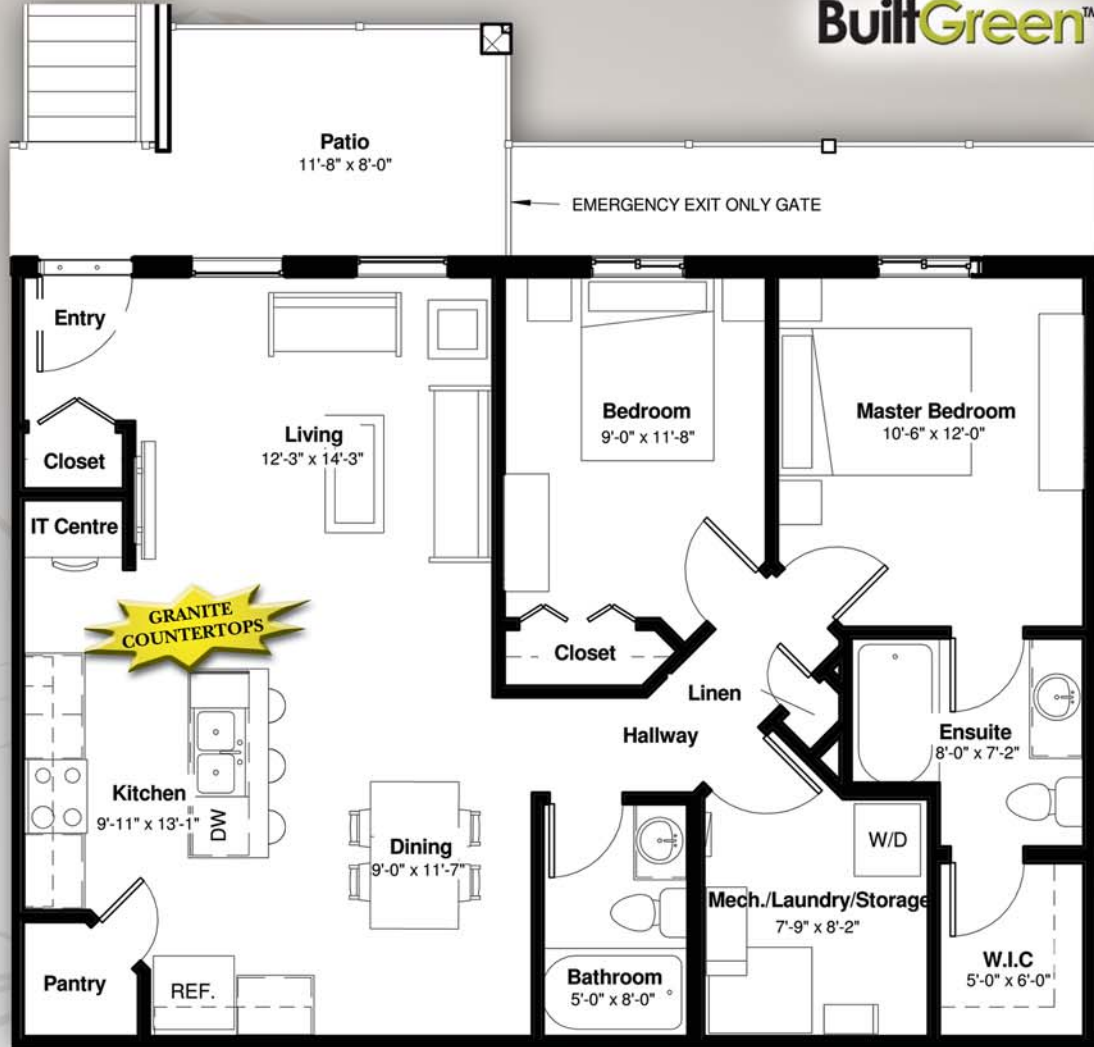

SOUTHLANDS POINTE

Another Classic Community



The Jade
 1008 Sq.Ft.
 2 Bedroom

- FEATURES:**
- GRANITE COUNTERTOPS
 - 10 Year Mortgage Assistance
 - Built Green Home
 - SAVE UP TO 50% on UTILITIES
 - Spacious Floor Plans
 - Tankless Hot Water
 - Oak Or Beech Cabinets
 - Spacious Kitchen
 - 5 Year New Home Warranty
 - Covered Patio
 - 2 Bedroom
 - Stacking Washer & Dryer
 - 5 Piece Appliance Package
 - Energy Efficient Windows
 - High Efficiency Furnace
 - No VOC Paint
 - Close to Amenities
 - And Much More.....



Subsidy Plan:

Year One :	\$475/month
Year Two :	\$435/month
Year Three :	\$390/month
Year Four :	\$345/month
Year Five :	\$300/month
Year Six :	\$250/month
Year Seven :	\$200/month
Year Eight :	\$150/month
Year Nine :	\$ 95/month
Year Ten :	\$ 40/month

The Developer reserves the right to make modifications and changes to building and property design, specifications and features; should they be necessary to maintain the high standard and design integrity of this project or to maintain local building code requirements.

For information
 contact our sales office
 (403) 526-2021
 or email sales@cclhomes.com

