




# SOUTHLANDS POINTE

Another Classic Community

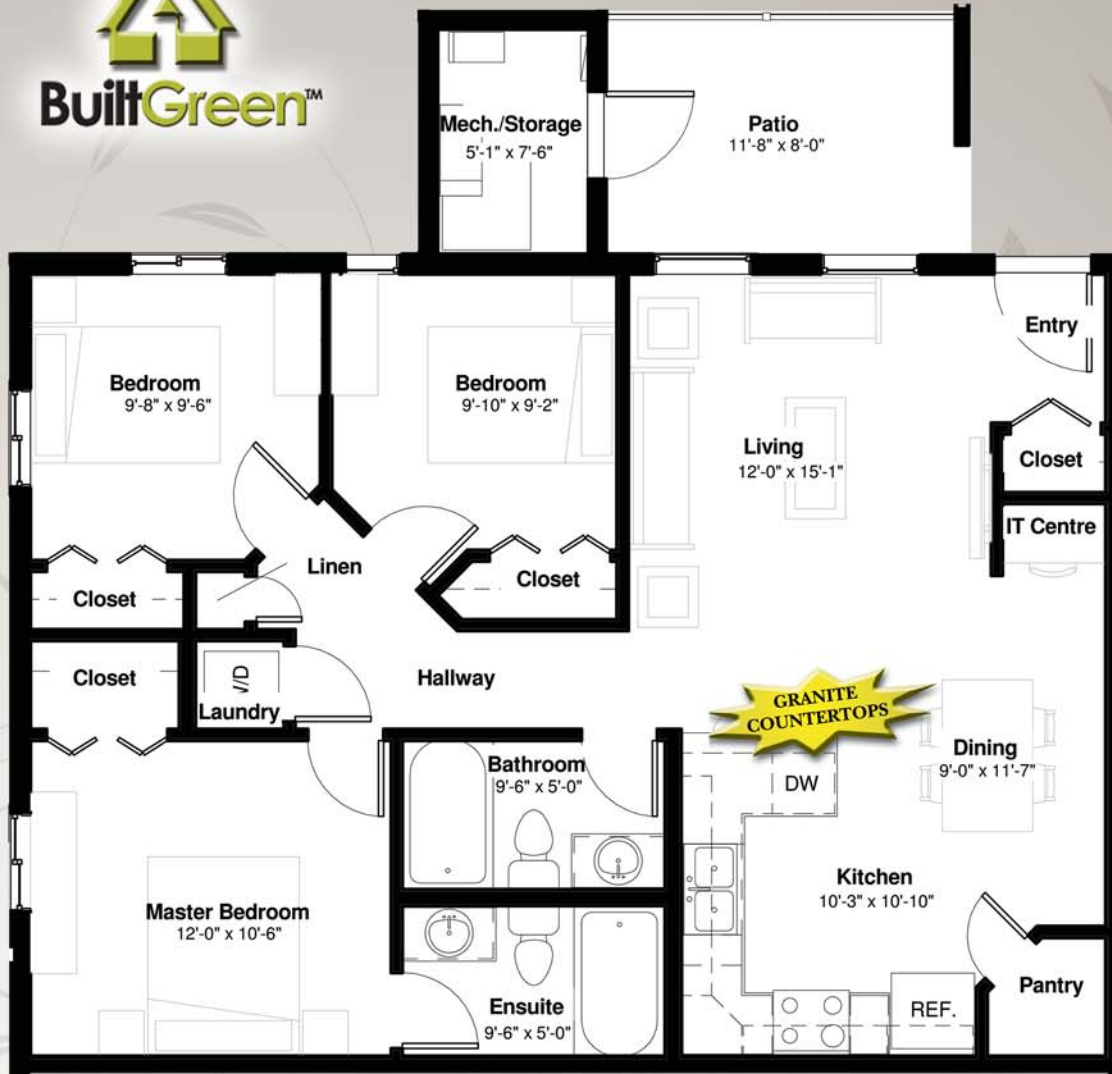
## The Coral

1034 Sq.Ft.  
3 Bedroom



### FEATURES:

- GRANITE COUNTERTOPS
- 10 Year Mortgage Assistance
- Built Green Home
- SAVE UP TO 50% on UTILITIES
- Spacious Floor Plans
- Tankless Hot Water
- Oak Or Beech Cabinets
- Spacious Kitchen
- 5 Year New Home Warranty
- Covered Patio
- 2 Bedroom
- Stacking Washer & Dryer
- 5 Piece Appliance Package
- Energy Efficient Windows
- High Efficiency Furnace
- Exterior Storage
- No VOC Paint
- Close to Amenities
- And Much More.....



#### Subsidy Plan:

Year One :	\$475/month
Year Two :	\$435/month
Year Three :	\$390/month
Year Four :	\$345/month
Year Five :	\$300/month
Year Six :	\$250/month
Year Seven :	\$200/month
Year Eight :	\$150/month
Year Nine :	\$ 95/month
Year Ten :	\$ 40/month



For information contact our sales office  
**(403) 526-2021**  
or email [sales@cclhomes.com](mailto:sales@cclhomes.com)

The Developer reserves the right to make modifications and changes to building and property design, specifications and features; should they be necessary to maintain the high standard and design integrity of this project or to maintain local building code requirements.